

**BRASS**



**Bespoke<sup>TM</sup>  
Impex**

**RAILLING FITTINGS**



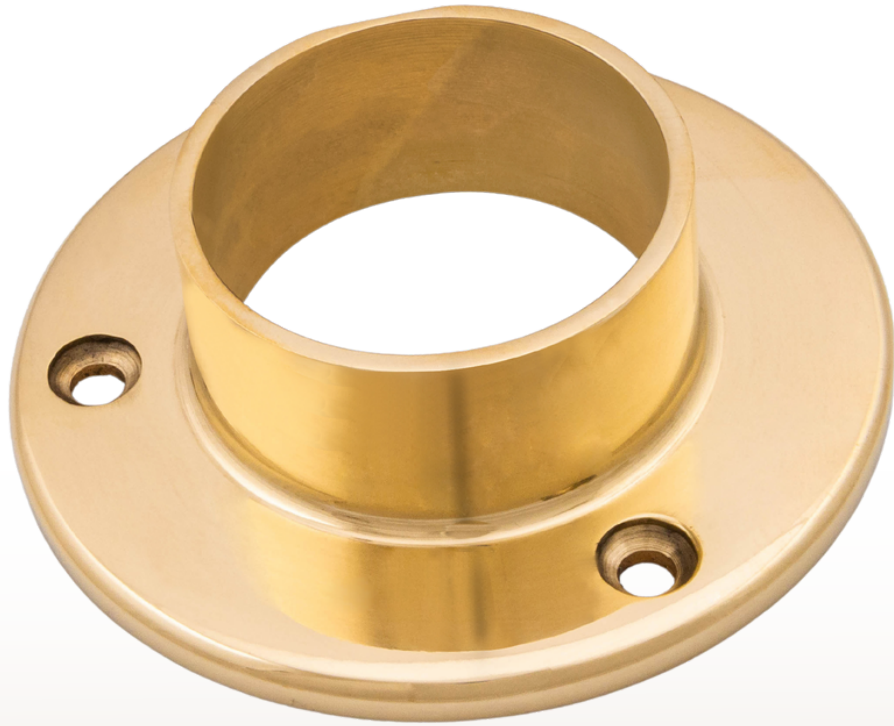
**CENTER POST  
FOOT RAIL  
BRACKET  
POLISH BRASS**

BSI016-BRF007

**CURVED FLUSH  
ELBOW 90  
DEGREE  
POLISH BRASS**

BSI016-BRF016





**WALL FLANGE  
POLISH BRASS**

BSI016-BRF014

**COMBINATION  
FOOT RAIL  
BRACKET  
POLISH BRASS**

BSI016-BRF001





**POST FOOT  
RAIL BRACKET  
90 DEGREE  
POLISH BRASS**

BSI016-BRF015



**FLUSH ANGLE  
135 DEGREE  
POLISH BRASS**

BSI016-BRF031



**HANDRAIL  
BRACKET  
POLISH BRASS**

BSI016-BRF020

**COMBINATION  
FOOT RAIL  
BRACKET  
POLISH BRASS**

BSI016-BRF029





**BALL SIDE  
OUTLET  
ELBOW  
POLISH BRASS**

BSI016-BRF018

**FLUSH FLAT  
END CAP  
POLISH BRASS**

BSI016-BRF011



**BAR MOUNT  
FOOT RAIL  
BRACKET  
POLISH BRASS**

BSI016-BRF003

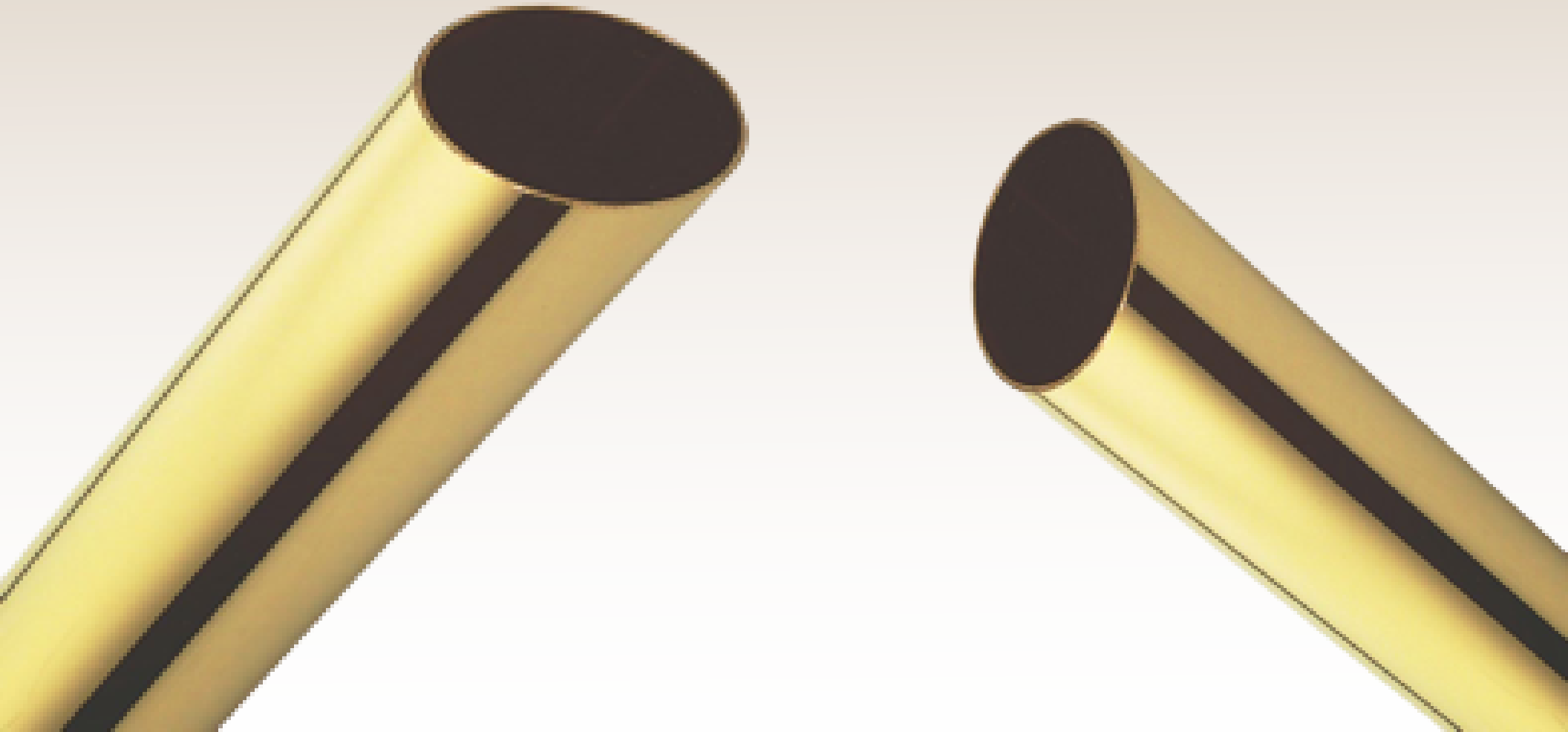


**POST FOOT  
RAIL BRACKET  
90 DEGREE  
POLISH BRASS**

BSI016-BRF002

# TUBE POLISH BRASS

BSI016-BRF051





# AVAILABLE FINISHES

- 1.POLISH BRASS**
- 2.CHROME PLATED**
- 3.SATIN CHROME**
- 4.ANTIQUE BRASS**
- 5.SATIN BRASS**

# WHY CHOOSE US?



- ★ In-House Manufacturing
- ★ Fair Price, **Discounts!**
- ★ Flexible **MOQ**
- ★ **Fast Response**
- ★ **Design Customisation**



# CONTACT US



**Office Address: - F-302, Plumeria Garden  
Estate Sector Omicron 3rd, Greater Noida- 201  
308 (U.P), INDIA**



**Works Address: - D-91, Sector- 2 Tala Nagri,  
Ramghat Road, Aligarh - 202001 (U.P), INDIA**



**+91-750 5517 682**



**info@bespokeimpex.com  
exports@bespokeimpex.com**

